



Sanive Handwash Troughs

Solid Surface Handwash Troughs

Stylish, hygienic and versatile handwash solution
Ideal of high traffic washroom areas

Specification

Washtrough Construction:

Trough Detail Options:

- Thermoformed 390: Thermoformed single piece seamless washtrough with covered internal corners
- Slope Lid 406: Contemporary sloping trough base falling to continuous drain channel

Material: Avonite Solid Surface mounted on ply substrate

Colours: ref to Dunhams colour selector - Solid Surface Colours

Unit Construction:

Frame: Factory constructed WBP ply sub-frame pre-fitted with lift off access panels and 100mm integral factory laminated plinth

SGL Panel Option:

SGL Core/Face: 13mm solid grade laminate panels

SGL edge: profile radiused and polished

Colour: ref to Dunhams colour selector

HPL Panel Option:

HPL Core/Face: 18mm high pressure laminate panels - high density particle-board faced both sides with high pressure laminate.

HPL edge: matching 2mm thick impact resistant ABS lipping

Colour: ref to Dunhams colour selector

Options:

Height: low height options available

Colour: Grafix range of patterns/designs to access panels available as an extra.

Unit construction options:

Factory Assembled 18mm MFC carcass with shelves and hinged doors

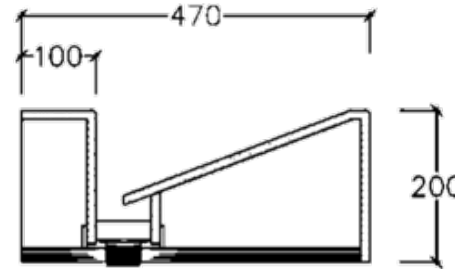
Factory assembled ply subframe with sloped under panels for access

Factory assembled ply sub-frame with panels supplied pre-hung on sprung cabinet hinges with key operated cam lock.

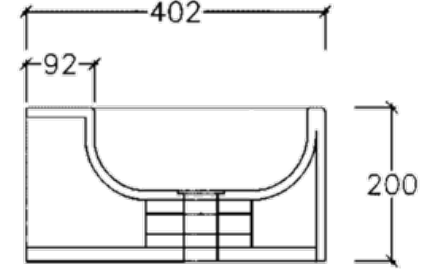
Trough: custom design troughs available

Design Options:

406 - Slope Lid:



390 - Thermoformed:



Find out more at [dunhamswashrooms.com](https://www.dunhamswashrooms.com) or call **01603 424855**