



# Sanivé Handwash Troughs



# Solid Surface Handwash Troughs

Stylish, hygienic and versatile handwash trough solution. Ideal of high traffic washroom areas.

## Specification

### Washtrough Construction:

Trough Detail Options:

- Thermoformed 390: Thermoformed single piece seamless washtrough with coved internal corners
- Slope Lid 406: Contemporary sloping trough base falling to continuous drain channel

Material: Avonite Solid Surface mounted on ply substrate Colours: ref to Dunhams colour selector - Solid Surface Colours

### Unit Construction:

Frame: Factory constructed WBP ply sub-frame pre-fitted with push on access panels and 100mm integral factory laminated plinth

SGL Panel Option:

SGL Core/Face: 13mm solid grade laminate panels

SGL edge: profile radiused and polished

Colour: ref to Dunhams colour selector

HPL Panel Option:

HPL Core/Face: 18mm high pressure laminate panels - WBP Plywood Board faced both sides with high pressure laminate.

HPL edge: matching 2mm thick impact resistant ABS lipping

Colour: ref to Dunhams colour selector

### Options:

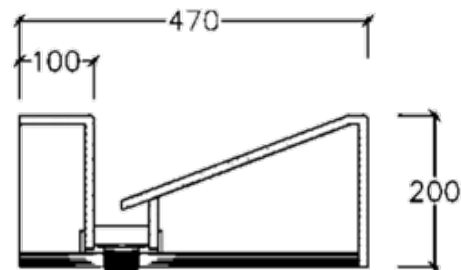
Height: low height options available

Colour: Grafix range of patterns/designs to access panels available at additional cost.

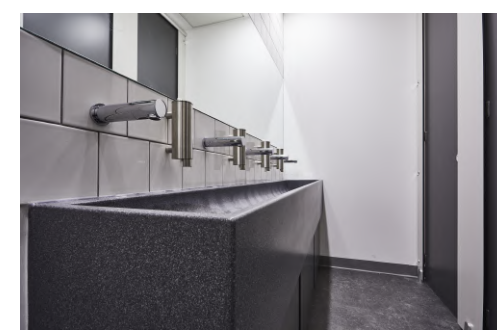
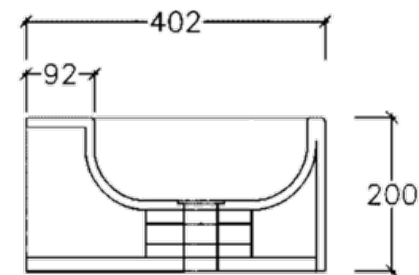
Factory assembled ply sub-frame with panels supplied pre-hung on sprung cabinet hinges with key operated cam lock available at additional cost.

### Design Options:

406 - Slope Lid:



390 - Thermoformed:



Find out more at [dunhamswashrooms.com](http://dunhamswashrooms.com) or call 01603 424855